

173 Balunie Drive

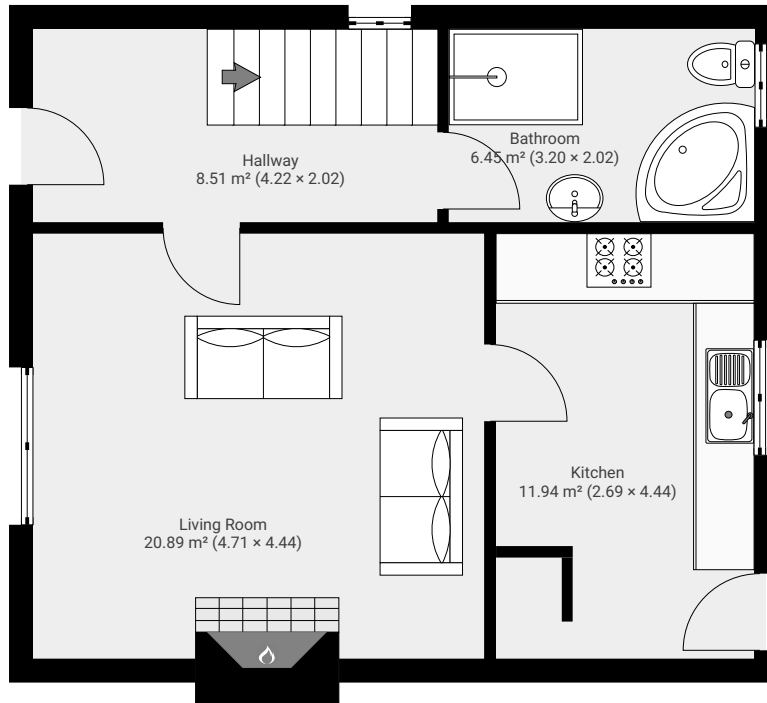
173 Balunie Drive, Dundee, DD4 8RU

TOTAL AREA: 91.32 m² • LIVING AREA: 91.32 m² • FLOORS: 2



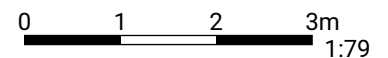
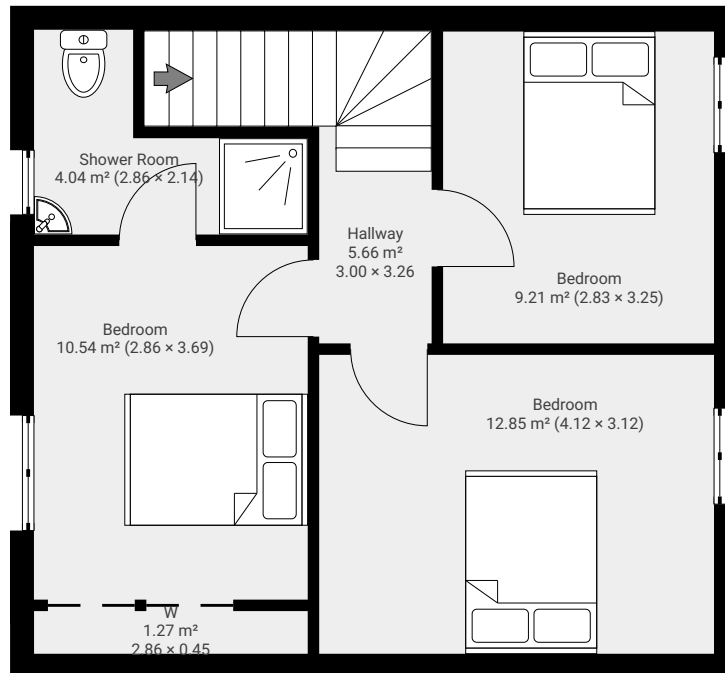
▼ Ground Floor

TOTAL AREA: 47.77 m² • LIVING AREA: 47.77 m² •



▼ 1st Floor

TOTAL AREA: 43.55 m² • LIVING AREA: 43.55 m² •



Page 1/1