

64 Fintry Crescent

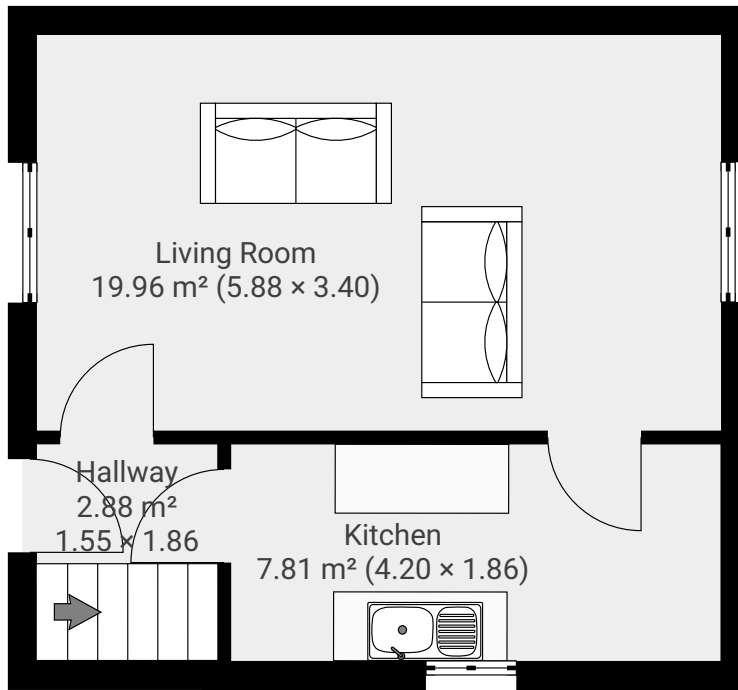
64 Fintry Crescent, Dundee, DD4 9EU

TOTAL AREA: 60.94 m² • LIVING AREA: 60.94 m² • FLOORS: 2



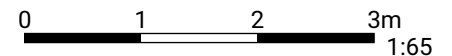
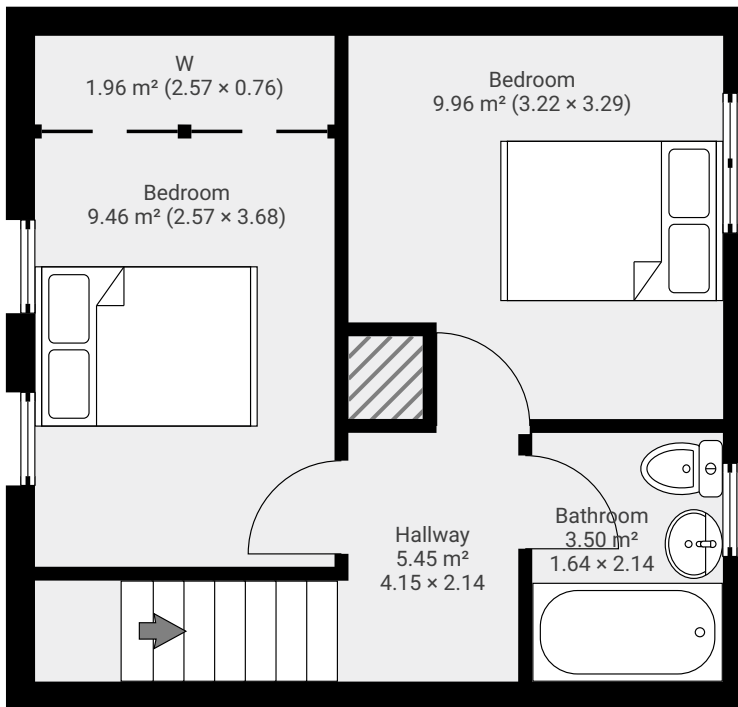
▼ Ground Floor

TOTAL AREA: 30.63 m² • LIVING AREA: 30.63 m² •



▼ 1st Floor

TOTAL AREA: 30.31 m² • LIVING AREA: 30.31 m² •



1:65

Page 1/1